

# The most powerful allrounder

ATMOS® Record 55

ATMOS® Record 55 DDS

**ROBUST  
EASY HANDLING  
SILENT**



## ATMOS® Record 55



## The powerful allrounder!

The ATMOS® Record 55 is most suitable for the versatile use in OT due to the high suction performance and the powerful vacuum.

The ATMOS® Record 55 is the first choice when a silent and powerful suction system is required.

Improved technology makes the ATMOS® Record 55 a reliable system for many surgical applications:

- Visceral surgery
- Orthopaedic surgery
- Thorax surgery
- Vascular surgery, etc.

In particular with regard to aesthetic-plastic surgery - especially liposuction - the ATMOS® Record 55 DDS is most suitable.

## The advantages of the ATMOS® Record 55 at a glance:

- Powerful:  
The airflow rate of 55 litres per minute always provides a free vision in the operating field.
- Almost noiseless:  
Low operation noise for concentrated work in the OT.
- Easy handling
- Hygienic:  
Modern canister systems and filters protect staff and patients.
- Reliable:  
Approved technology guarantees trouble-free operation.
- No breakdown caused by blocked bacterial filter.
- Canisters the way you need them:  
Disposable and reusable systems are possible.

## ATMOS® Direct-Docking-System (DDS)

Autoclavable canister reduces work efforts to a minimum.

The innovation of the ATMOS® Record 55 is in the detail:

- No hose connection required „plug and play“.
- Changeover lever for easy handling.
- Hydrophobic bacterial filter integrated in the canister.
- Canister easy to mount and demount.
- Undercut of individual parts are minimized.

## Your advantages:

- Time-saving during start-up of the device.
- Easy handling.
- Wrong hose connections are excluded.
- Easy, quick and thorough reprocessing.



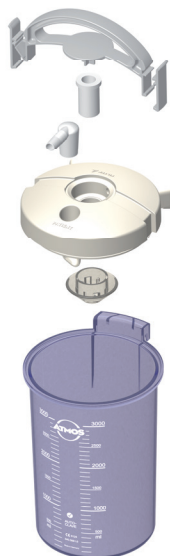
## ATMOS® Record 55 DDS — The secure solution!

Our order recommendation:

	REF
	ATMOS® Record 55 DDS (2x3 l canisters) 444.0930.0
	Foot switch 443.0755.0
	Foot regulator set for vacuum control 443.0770.0

### Detailed information:

Further information about the ATMOS® Record 55 DDS and possible accessories you can find on the following pages.



### Changeover lever

for comfortable selection of the collection canister during trolley operation.

### Quick exchange of bacterial filter

which has an extended filter surface.

### Hose connection with twisted inlet

reduces foam formation and with it filter service life is increased

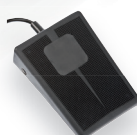


## ATMOS® Record 55 — with standard rail

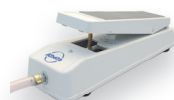
Basic unit:



or



or



	REF
ATMOS® Record 55 with standard rail	443.0700.0
Safety canister 250 ml with integrated DDS-bacterial filter / overflow stop, incl. adapter for arthroscopy (shaver, lavages), oral and maxil- lofacial surgery, liposuction etc.	444.0646.1
Foot switch	443.0755.0
Foot regulator set for vacuum control	443.0770.0


with Receptal® canisters:




or

	REF
Receptal® package 2 x 3 l	444.0029.0
Receptal® package 2 x 2 l	444.0028.0
Changeover lever	340.0096.0

with reusable glass secretion canisters:

		REF
	2x or 2x	Graduated secretion canister 3 l height 247 mm, Ø 145 mm
		444.0033.0
		Graduated secretion canister 5 l height 302 mm, Ø 169 mm
		444.0034.0
		Secretion canister lid incl. stan- dard rail holder
		444.0650.0
		Socket nipple set consisting of: Double socket nipple, hose reducer, mechanical overflow safety
		444.0640.0

with Serres® canisters:

		REF
	3x	Serres® dev. holder
		340.0095.0
		Changeover lever
		340.0096.0
	2x	Serres® canister 2 l
		310.0402.0
	2x	Serres® suction bag 2 l with gel- ling agent not autoclavable, 22 pcs.
		310.0400.0
	or 2x	Serres® canister 3 l
		310.0403.0
	2x	Serres® suction bag 3 l with gel- ling agent not autoclavable, 20 pcs.
		310.0401.0

## ATMOS® Record 55 DDS

ATMOS® Record 55 DDS (2 x 3 l canister)	REF
<p>Mobile surgical suction unit for very high demands Quiet running, infinitely variable vacuum control, damped vacuum display, change-over for canister selection, for direct docking system canisters, connection for foot controller</p> <p>[1] Included in delivery: basic unit, operating instructions, mains cable, 2 DDS canisters 3 l, 2 DDS canister lids, 2 DDS canister handles, 2 DDS splash protections, 10 DDS-bacterial filters with integrated oversuction stop, DDS hose adapter set (Ø 6 mm / Ø 10 mm), suction hose Ø = 6 mm, L = 2.10 m</p>	444.0930.0
ATMOS® Record 55 DDS (2 x 5 l canister)	444.0940.0
Accessories for ATMOS® Record 55 DDS	REF
[2] DDS-secretion canister, plastic, 1.5 l, autoclavable Height 146 mm, external Ø 166 mm	340.0050.0
[3] DDS-secretion canister, plastic, 3 l, autoclavable Height 247 mm, external Ø 166 mm	340.0051.0
[4] DDS-secretion canister, plastic, 5 l, autoclavable Height 396 mm, external Ø 166 mm	340.0052.0
<p>DDS-canister lid, complete set consisting of:</p> <p>[5] DDS canister lid, DDS canister handle, DDS splash protection, DDS hose adapter set, Ø 6 mm + Ø 10 mm, DDS bacterial filter / oversuction stop, hose holder for DDS canister.</p>	340.0040.0
[6] DDS-canister lid with gaskets	340.0053.0
[7] DDS-canister handle, grey	340.0055.0
[8] DDS canister handle, blue	340.0326.0
[9] DDS-splash protection, silicone	340.0056.0
[10] DDS-hose adapter set, Ø 6 mm + Ø 10 mm	340.0057.0
[11] DDS-hose holder	340.0066.0
<p>DDS adapter for tissue collector</p> <p>[12] connects the ATMOS DDS canister to the tissue collector temperature-resistant up to 200 °C</p>	340.0062.0





1 REF 444.0930.0



2 REF 340.0050.0



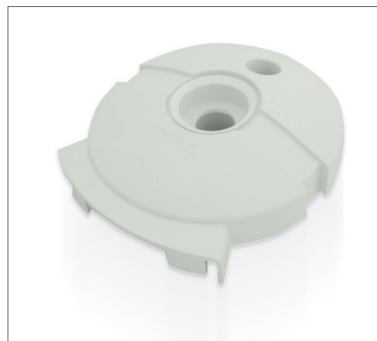
3 REF 340.0051.0



4 REF 340.0052.0



5 REF 340.0040.0



6 REF 340.0053.0



7 REF 340.0055.0



8 REF 340.0326.0



9 REF 340.0056.0



10 REF 340.0057.0



11 REF 340.0066.0



12 REF 340.0062.0

## ATMOS® Record 55

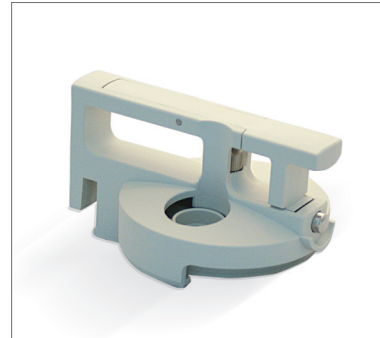
ATMOS® Record 55 with standard rail	REF
<p>Mobile surgical suction unit for very high demands Quiet running, infinitely variable vacuum control, damped vacuum display, change-over for canister selection, connection for foot controller</p> <p>Technical data:</p> <p>[1] Air-flow rate of pump: 55 ± 3 l/min, vacuum -98 kPa/-735 mmHg at sea level, 230 V~, 50/60 Hz, dimensions (H x W x D): 940 x 500 x 390 mm Included in delivery: basic unit, operating instructions, mains cable, standard rail (assembled), Suction hose, Ø 6 mm, L = 2 m, Suction hose, Ø 10 mm, L = 2 m, UFO bacterial filter</p>	443.0700.0
Accessories for ATMOS® Record 55 with standard rail	REF
<p>[2] Single-Docking-Station (SDS) Single-docking-station enables the use of DDS-canisters in connection with ZV / ZD systems. Attention: please order canister with lid separately!</p>	320.0640.0
<p>[3] Secretion canister lid incl. standard rail holder</p>	444.0650.0
<p>[4] Socket nipple set consisting of: Double socket nipple, hose reducer, mechanical overflow safety</p>	444.0640.0
<p>[5] Graduated secretion canister 1.5 l Height 192 mm, external Ø 115 mm</p>	444.0032.0
<p>[6] Graduated secretion canister 3 l Height 247 mm, Ø 145 mm</p>	444.0033.0
<p>[7] Graduated secretion canister 5 l Height 302 mm, Ø 169 mm</p>	444.0034.0
<p>[8] Safety canister 250 ml with integrated DDS-bacterial filter / overflow stop, incl. adapter for arthroscopy (shaver, lavages), oral and maxillofacial surgery, liposuction etc.</p>	444.0646.1
<p>[9] Vacuum changeover station Enables the changeover between two secretion canisters. Can be fixed to the standard rail with the adapter, REF 340.0095.0 Material: Aluminium Part is not required for DDS!</p>	340.0096.0



1 REF 443.0700.0



2 REF 320.0640.0



3 REF 444.0650.0



4 REF 444.0640.0



5 REF 444.0032.0



6 REF 444.0033.0



7 REF 444.0034.0



8 REF 444.0646.1



9 REF 340.0096.0

## Receptal®

Accessories		REF
1	Receptal® canister 1,5 l	310.0221.0
2	Receptal® canister 2 l	443.0256.0
3	Receptal® canister 3 l	444.0157.0
	Receptal® package 2 x 1.5 l consisting of:	
4	2 Receptal®-holder for 1 canister, 2 canisters for Receptal®-suction bags 1.5 l, 2 Receptal®-suction bags 1.5 l, one of them with integrated overflow valve filter, connection hose, L = 12 cm Basic unit must be ordered separately!	444.0027.0
	Receptal® package 1 x 2 l consisting of:	
5	1 Receptal®-holder for 1 canister, 1 canisters for Receptal®-suction bags 2 l, 1 Receptal®-suction bags 2 l with integrated overflow valve filter Basic unit must be ordered separately!	444.0030.0
6	Receptal® package 2 x 2 l	444.0028.0
7	Receptal® package 1 x 3 l	444.0031.0
8	Receptal® package 2 x 3 l	444.0029.0
Consumables		REF
9	Receptal® suction bag 1.5 l, not autoclavable, 50 pcs.	310.0222.2
10	Receptal® disposable bag 2 l, without integrated overflow protection Not autoclavable, 50 pcs., change: 1 x per patient	443.0257.0
	Receptal® suction bag 2 l, with integrated overflow protection Not autoclavable, 50 pcs., change: 1 x per patient	443.0257.2
11	Receptal® suction bag 3 l, without integrated overflow protection For tandem hose system, not autoclavable, 50 pcs., change: 1 x per patient.	444.0153.0
	Receptal® suction bag 3 l, with integrated overflow protection Not autoclavable, 50 pcs., change: 1 x per patient.	444.0154.0





1 REF 310.0221.0



2 REF 443.0256.0



3 REF 444.0157.0



4 REF 444.0027.0



5 REF 444.0030.0



6 REF 444.0028.0



7 REF 444.0031.0



8 REF 444.0029.0



9 REF 310.0222.2



10 REF 443.0257.0



11 REF 444.0153.0

## Serres® & MediVac®

Accessories Serres®		REF
1	Serres® suction bag 2 l with gelling agent not autoclavable, 22 St.	310.0400.0
2	Serres® suction bag, 1 l, not autoclavable, 36 pcs. with angled connection	312.0466.0
3	Serres® suction bag 3 l with gelling agent not autoclavable, 20 pcs.	310.0401.0
4	Serres® external canister 1 l	312.0465.0
5	Serres® canister 2 l	310.0402.0
6	Serres® canister 3 l	310.0403.0
7	Serres® dev. holder	340.0095.0
Accessories MediVac®		REF
8	Medi-Vac® canister 1 l	312.0473.0
9	Standard rail support For disposable system Medi-Vac® 1 l, 1.5 l	444.0451.0
Consumables MediVac®		REF
10	Medi-Vac® suction bag 1 l, not autoclavable, 50 pcs.	312.0474.0



1 REF 310.0400.0



2 REF 312.0466.0



3 REF 310.0401.0



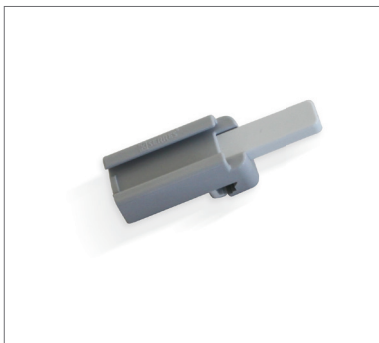
4 REF 312.0465.0



5 REF 310.0402.0



6 REF 310.0403.0



7 REF 340.0095.0



9 REF 444.0451.0



10 REF 312.0474.0



8 REF 312.0473.0

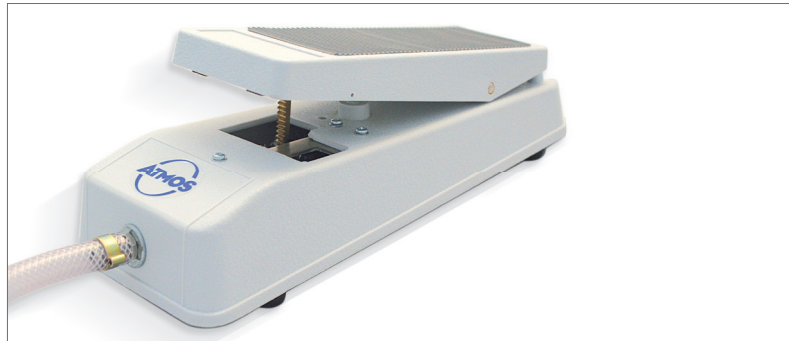
## Accessories

Accessories for all ATMOS® Record 55		REF
1	Foot switch for on and off switching	443.0755.0
2	Foot regulator set for vacuum control	443.0770.0
3	Hose support, stainless steel for attaching to standard rail	320.0611.0
4	Deposit tray, stainless steel with support for rail system	443.0790.0

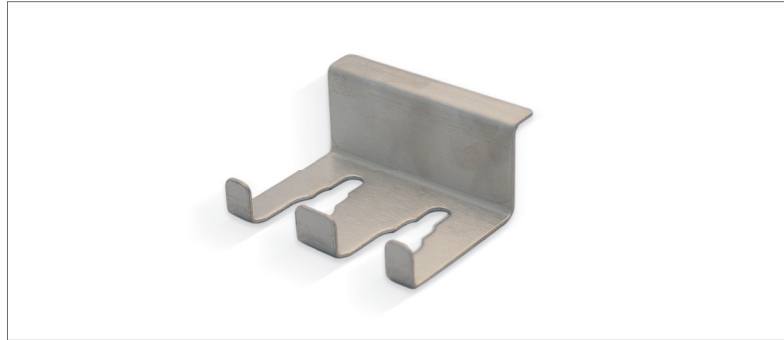




1 REF 443.0755.0



2 REF 443.0770.0



3 REF 320.0611.0



4 REF 443.0790.0

## Consumables

Consumables	REF
[1] Suction hose, silicone, Ø 10 mm, L= 2m, 1 pc temperature-resistant up to 200 °C	000.0243.0
[2] Suction hose, silicone, Ø 6 mm, L = 2 m, 1 pc temperature-resistant up to 200 °C	000.0361.0
[3] Suction hose, disposable, Ø 6 mm, L = 2.10 m, 50 pcs. Change: 1 x per patient, individually packed	006.0059.0
[4] Bacterial filter for ATMOS DDS secretion canister, 10 pcs. disposable, not autoclavable, For hygienic reasons a bi-weekly ex- change is recommended. In case of contamination or new patient the filter must immediately be replaced	340.0054.0
[5] Tissue collector 300 ml, disposable Ø 6 mm, change: 1 x per patient	340.0061.0
[6] Collector sieve 50 ml, disposable Ø 6 mm, change: 1 x per patient	401.0555.0
[7] Bacterial filter disposable, not autoclavable, change: 1 x per patient	443.0738.0
[8] Bacterial filter FFG - hydrophobic	444.0082.0
[9] Bacterial filter disposable, not autoclavable, Change: 1 x per patient	444.0628.0



1 REF 000.0243.0



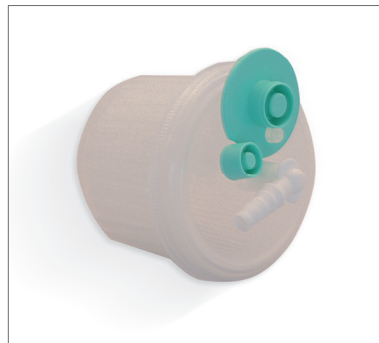
3 REF 006.0059.0



2 REF 000.0361.0



4 REF 340.0054.0



5 REF 340.0061.0



6 REF 401.0555.0



7 REF 443.0738.0



8 REF 444.0082.0



9 REF 444.0628.0



**MedizinTechnik**

ATMOS MedizinTechnik GmbH & Co. KG

Ludwig-Kegel-Str. 16

79853 Lenzkirch / Germany

Tel: +49 7653 689-374

ApplicationSolutions@atmosmed.com

**[www.atmosmed.com](http://www.atmosmed.com)**